



Installing ¾" LED's on a Jeep JK equipped with MCE Fenders



Parts needed:

2- 3/4" LED's with grommets in clear/amber or amber/amber

4- 16ga. to 14ga. Heat shrink butt connectors

1- JK sporting MCE Fenders



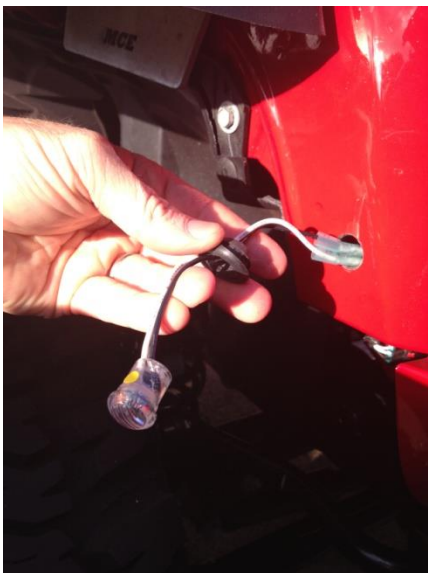
1) Install butt connectors on LED's

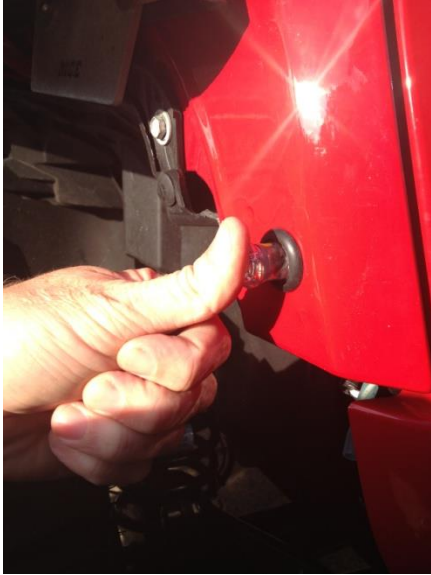


2) Open up 5/16" hole on side of grill that is exposed after the MCE Fenders are installed to 3/4". We recommend using a "step" or "vary" bit.



3) Slide grommet off plastic portion of LED. Slide into the 3/4" hole. Push grommet through hole and set it. Then push LED into grommet.





4) Make sure marker light power is off, and cut the two wires that fed the factory marker lights on OEM plastic fenders.



5) Install butt connectors. The LED's are polarity sensitive (will only light with power going one way). This 2014 JK needed wires to be black/white and white/black for the LED's to illuminate. Use a lighter to shrink the butt connectors covers. Tuck wires away, and you are complete.

