



SYNERGY MFG. 870 INDUSTRIAL WAY, SAN LUIS OBISPO, CA (805) 242-0397

8060 – JEEP JK REAR SWAY BAR LINKS

GENERAL NOTES:

- These instructions are also available on our website; www.synergymfg.com. Check the website before you begin for any updated instructions and additional photos for your reference.
- Installation can be done with simple hand tools and vehicle sitting on ground under its own weight. However installation is much easier with suspension at full droop and both rear tires removed. Use a quality jack and jack stands whenever working under a vehicle.

PARTS LIST:

• **PART NUMBER – PART DESCRIPTION**

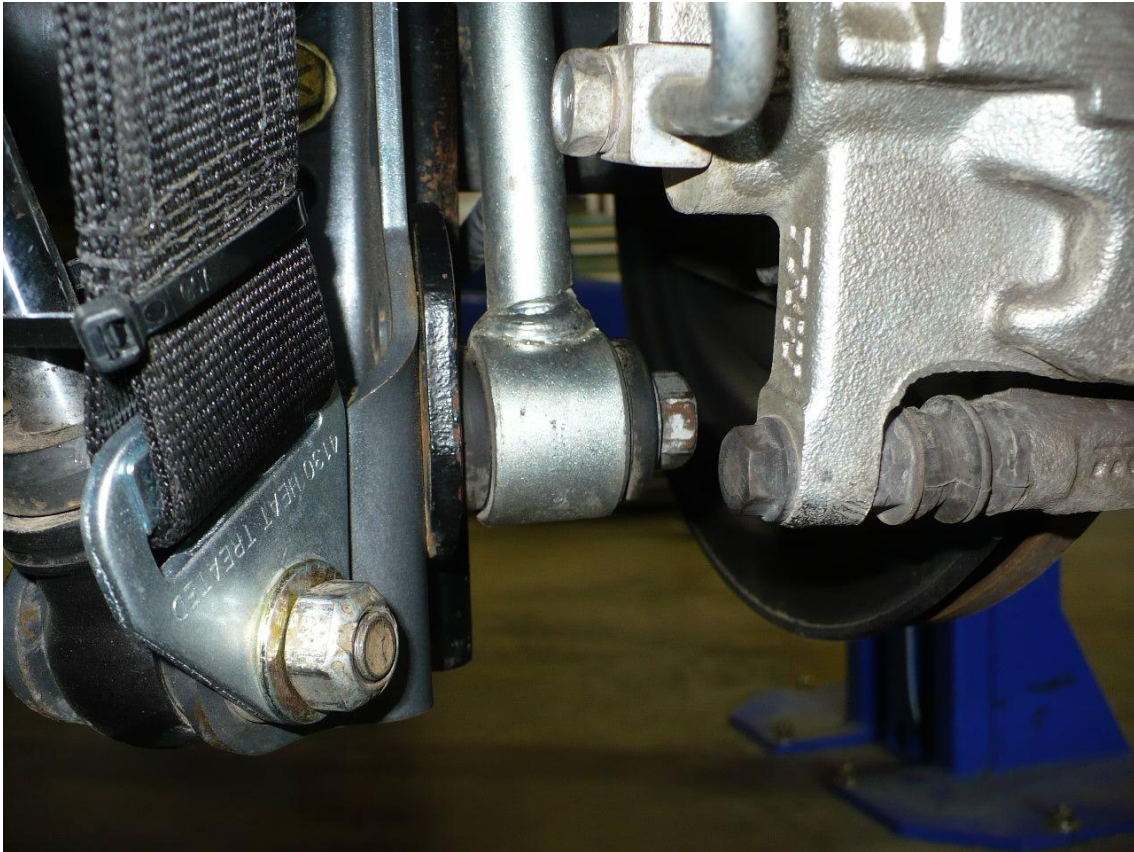
- (2) 806001 JK rear sway bar links assembled with tie rod end & jam nut
- (2) ½-20 UNF top lock flange nut

Parts / Tools Needed to complete installation:

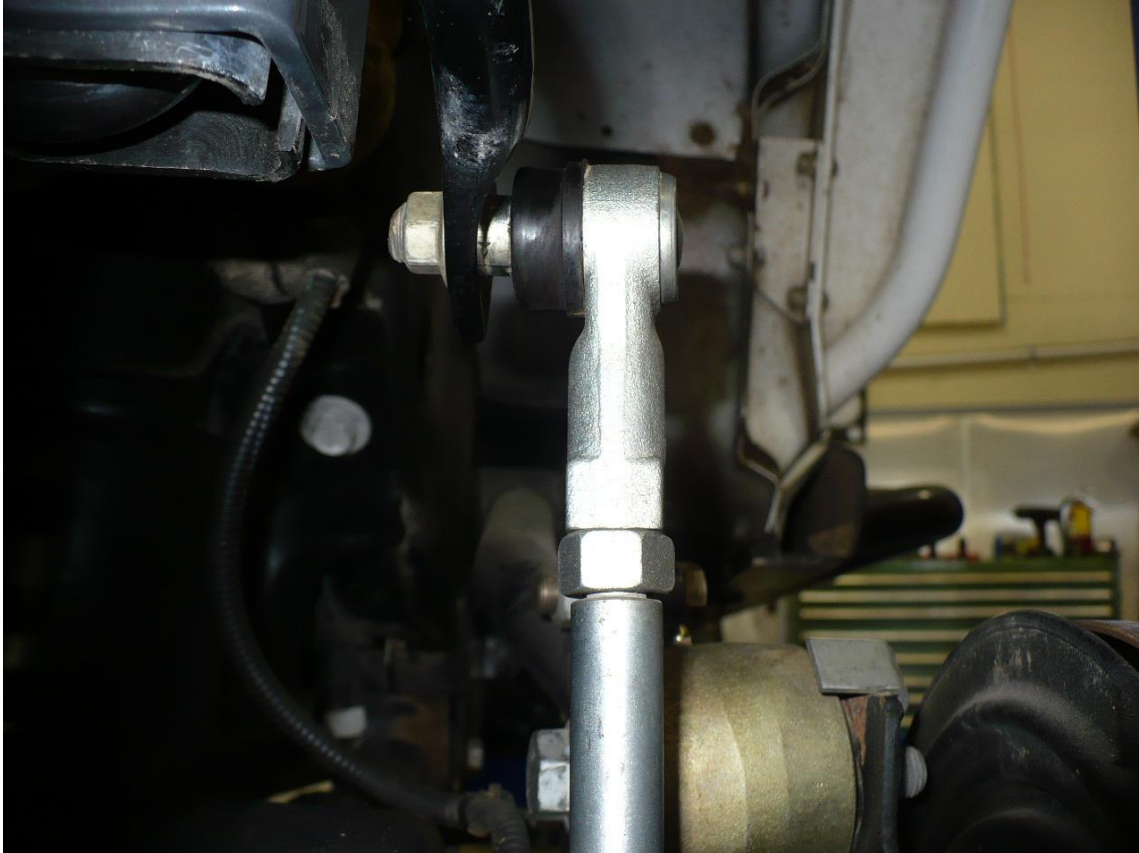
- Basic simple hand tools.
 - Wrench / socket sizes: 14mm, 15mm, 18mm, ¾"

INSTALLATION:

- 1) Remove the factory sway bar links. 18mm socket / wrench.
- 2) Make sure the new sway bar links are roughly the same length left to right by adjusting the tie rod ends. On lifts 4.5" or less, adjust tie rod ends all the way down.
- 3) Install sway bar link to axle using factory hardware as shown. Insert bolt from wheel side and fasten with nut on inner side. Torque to 75 ft-lbs.



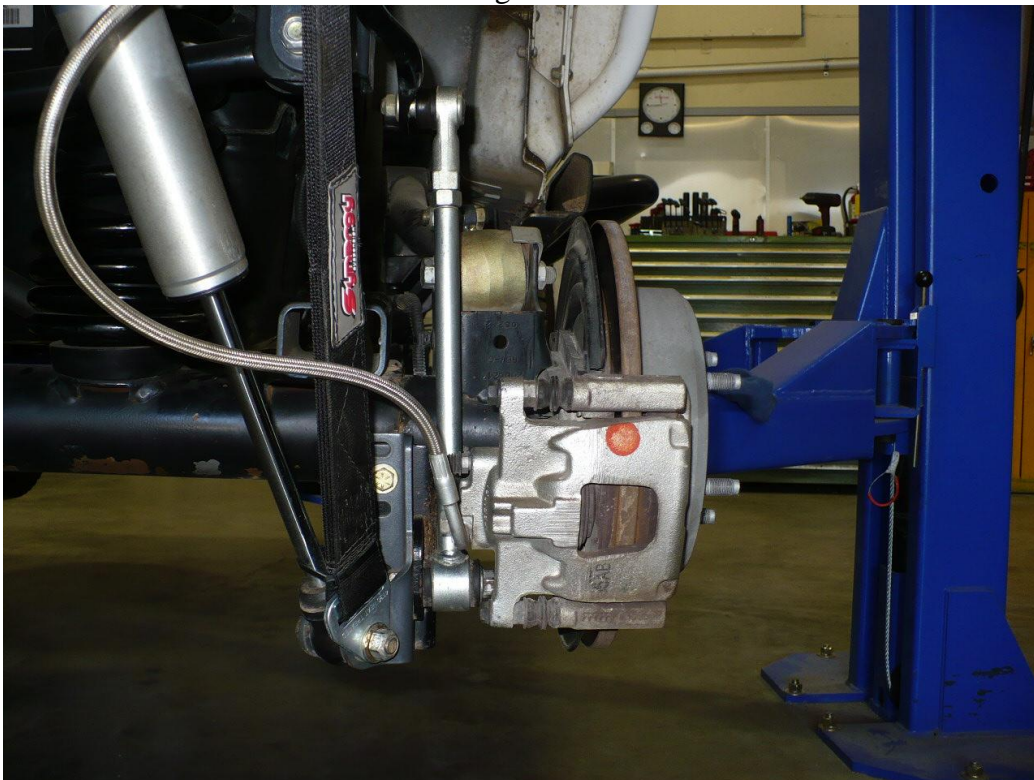
- 4) Install sway bar link to sway bar as shown. Use a 14mm wrench to hold the flats on the tie rod end stud and a 15mm wrench to tighten the nut. Torque to 50 ft-lbs.



- 5) With vehicle set at ride height, set tie rod end joint to neutral and tighten tie rod end jam nut. Use two $\frac{3}{4}$ " wrenches and snug jam nut against tie rod end.



- 6) Recheck all hardware after 100 miles of driving.



Installation is Complete